

# SSKV-T-Muffe

## SSKV-Female T-adaptor

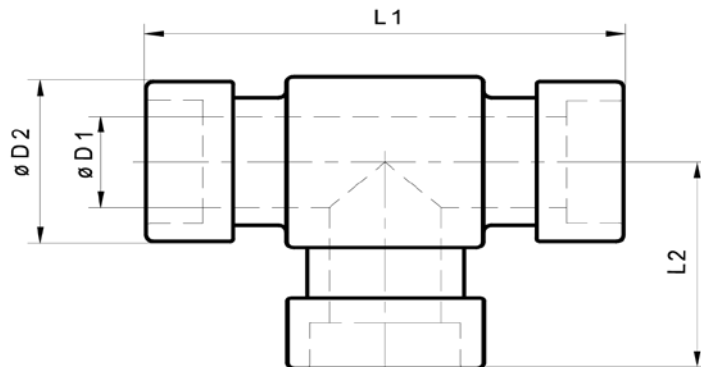


System: Steckschalenklemmverbindung DBP  
 System: Push-in clamping shell connections (German patent)

Prange GmbH  
 Schlauch & Armaturentechnik

Standardausführung:  
 Armatur Stahl verzinkt,  
 DIN 50961-Fe-Zn12c-C

Standard model:  
 galvanized steel fitting,  
 DIN 50961-Fe-Zn12c-C



**Schlaucharmaturen für Schläuche nach DIN EN 853-856**  
 Hose fittings for hoses as per DIN EN 853-856

Stand: Februar 2011 Technische Änderungen vorbehalten / Technical modifications reserved

| DN<br>DN | Maximaler Arbeitsdruck (bar)<br>Maximum working pressure (bar) |     |     |     |     | D1<br>mm | D2<br>mm | L1<br>mm | L2<br>mm | Bestell-Nr.<br>Order no. |
|----------|--|-----|-----|-----|-----|----------|----------|----------|----------|--------------------------|
|          | Schlauch Typen<br>Hose types                                   |     |     |     |     |          |          |          |          |                          |
|          | 2ST  | 4SP | 4SH | R13 | R15 |          |          |          |          |                          |
| 10       | 275  | 445 |     |     |     | 7,0      | 20,0     | 76,0     | 40,0     | NV102502                 |
| 12       | 275  |     |     |     |     | 9,8      | 22,0     | 86,0     | 43,0     | NV122505                 |
| 12       |  | 415 |     |     |     | 10,0     | 24,0     | 88,0     | 44,0     | HV122501                 |
| 20       | 215  | 350 |     |     |     | 15,0     | 28,0     | 88,0     | 46,0     | NV202509                 |
| 20       |  |     | 420 | 350 | 420 | 15,0     | 30,0     | 94,0     | 47,0     | HV202501                 |
| 25       | 165  | 280 |     |     |     | 19,0     | 33,0     | 100,0    | 50,0     | NV252506                 |
| 25       |  |     | 380 | 350 | 420 | 20,0     | 36,0     | 116,0    | 58,0     | HV252507                 |
| 32       | 140  | 210 |     |     |     | 24,0     | 39,8     | 123,0    | 65,0     | NV322501                 |
| 32       |  |     | 350 | 350 | 420 | 24,0     | 44,0     | 164,0    | 65,0     | HV322501                 |
| 40       | 100  | 185 |     |     |     | 32,0     | 53,0     | 140,0    | 70,0     | NV402501                 |
| 40       |  |     | 290 | 350 | 420 | 30,0     | 54,0     | 170,0    | 85,0     | HV402512                 |
| 50       | 90   | 175 |     |     |     | 44,0     | 65,0     | 160,0    | 80,0     | NV502501                 |
| 50       |  |     | 250 | 350 |     | 40,0     | 70,0     | 180,0    | 90,0     | HV502501                 |
| 63       | 350  |     |     |     |     | 50,0     | 84,0     | 220,0    | 110,0    | HV652501                 |
| 63       | 70   |     |     |     |     | 55,0     | 75,0     | 170,0    | 85,0     | NV652501                 |
| 80       | 70   |     |     |     |     | 70,0     | 99,3     | 230,0    | 120,0    | NV802501                 |
| 100      | 64   |     |     |     |     | 87,0     | 118,0    |          |          | NV862501                 |
| 125      | 64   |     |     |     |     | 100,0    | 127,0    |          |          | NV892501                 |
| 150      | 64   |     |     |     |     | 138,0    | 176,0    |          |          | NV902501                 |

Systeme für Industrie und Handel

Prange GmbH • Waldweg 12 • 45549 Sprockhövel • Büro und Lager • Zum Ludwigstal 3a • 45527 Hattingen-Holthausen  
 Tel.: +49-(0)2324-311 21 / -22 • Fax: +49-(0)2324-311 23 • info@sskv-prange.de • www.sskv-prange.de

