

# SSKV-Schlauchkupplung

## SSKV-Hose Connector

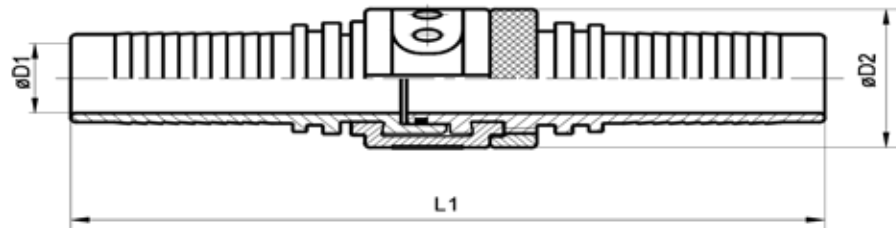


System: Steckschalenklemmverbindung DBP  
 System: Push-in clamping shell connections (German patent)

**Prange GmbH**  
 Schlauch & Armaturentechnik

Standardausführung:  
 Dichtungssatz NBR / POM,  
 Armatur Stahl verzinkt  
 DIN 50961-Fe-Zn12c-C

Standard model:  
 Sealing set: NBR / POM,  
 galvanized steel fitting  
 DIN 50961-Fe-Zn12c-C



**Schlaucharmaturen für Schläuche nach DIN EN 853-856**  
 Hose fittings for hoses as per DIN EN 853-856

Stand: Februar 2011 Technische Änderungen vorbehalten / Technical modifications reserved

DN DN	Maximaler Arbeitsdruck (bar) Maximum working pressure (bar)					D1 mm	D2 mm	L1 mm			Bestell-Nr. Order no.
	Schlauch Typen Hose types										
	2ST	4SP	4SH	R13	R15						
10	275	445				7,0	25,0	125,0			NV100001
12	275					9,8	28,0	133,0			NV120000
12		415				10,0	30,0	146,0			HV120000
20	215	350				15,0	36,0	170,0			NV200001
20			420	350	420	15,0	40,0	208,0			HV200002
25	165	320				19,0	42,0	188,0			NV250000
25			385	350	420	20,0	46,0	218,0			HV250000
32	140	210				24,0	50,0	216,0			NV320000
32			350	350	420	24,0	52,0	217,0			HV320000
40	100	185				32,0	64,0	232,0			NV400000
40			290	350	420	30,0	64,0	316,0			HV400020
50	90	175				44,0	75,0	254,0			NV500000
50			250	350	420	40,0	78,0	330,0			HV500001
63	350					50,0	98,0	445,0			HV650001
63	70					55,0	85,0	299,0			NV650001
80	70					70/67,0	110,0	426,0			NV800000
100	64					87,0	138,0	426,0			NV860001
125	64					100,0	144,0				NV890001
150						138,0	192,0	485,0			NV900001

Systeme für Industrie und Handel

Prange GmbH • Waldweg 12 • 45549 Sprockhövel • Büro und Lager • Zum Ludwigstal 3a • 45527 Hattingen-Holthausen  
 Tel.: +49-(0)2324-311 21 / -22 • Fax: +49-(0)2324-311 23 • info@sskv-prange.de • www.sskv-prange.de

