

SSKV-Doppelmuffe

SSKV-Double Female straight adaptor

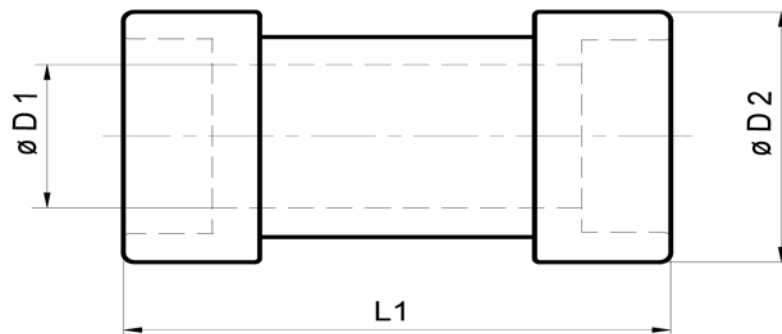


System: Steckschalenklemmverbindung DBP
 System: Push-in clamping shell connections (German patent)

Prange GmbH
 Schlauch & Armaturentechnik

Standardausführung:
 Armatur Stahl verzinkt,
 DIN 50961-Fe-Zn12c-C

Standard model:
 galvanized steel fitting,
 DIN 50961-Fe-Zn12c-C



Schlaucharmaturen für Schläuche nach DIN EN 853-856
 Hose fittings for hoses as per DIN EN 853-856

Stand: Februar 2011 Technische Änderungen vorbehalten / Technical modifications reserved

DN DN	Maximaler Arbeitsdruck (bar) Maximum working pressure (bar)					D1 mm	D2 mm	L1 mm			Bestell-Nr. Order no.
	Schlauch Typen Hose types										
	2ST	4SP	4SH	R13	R15						
10	275	445				7,0	20,0	50,0			NV102001
12	275					9,8	22,0	53,0			NV122001
12		415				10,0	24,0	53,0			HV122001
20	215	350				15,0	28,0	54,0			NV202001
20			420	350	420	15,0	30,0	54,0			HV202001
25	165	320				19,0	33,0	57,0			NV252001
25			385	350	420	20,0	36,0	62,0			HV252002
32	140	210				24,0	39,8	74,0			NV322001
32			350	350	420	24,0	44,0	78,0			HV322005
40	100	185				32,0	53,0	75,0			NV402001
40			290	350	420	30,0	54,0	86,0			HV402002
50	90	175				44,0	65,0	80,0			NV502001
50			250	350		40,0	70,0	92,0			HV502002
63	350					50,0	84,0	125,0			HV652001
65	70					55,0	75,0	80,0			NV652001
80	70					70,0	99,3	109,0			NV802001
100	64					87,0	118,0	130,0			NV862001
125	64					100,0	127,0	110,0			NV892001
150	64					138,0	176,0	150,0			NV902001

Systeme für Industrie und Handel

Prange GmbH • Waldweg 12 • 45549 Sprockhövel • Büro und Lager • Zum Ludwigstal 3a • 45527 Hattingen-Holthausen
 Tel.: +49-(0)2324-311 21 / -22 • Fax: +49-(0)2324-311 23 • info@sskv-prange.de • www.sskv-prange.de

